

Welcome



St. Catherine's
RC Primary School

Reception Meeting 2019

Monday 24th June 2019

Love

Faith

Respect

Perseverance

Compassion

Inspiration

Be who God wants you to be
and so set the world on fire!

Saint Catherine of Siena



St. Catherine's
RC Primary School

Our vision is to be the best Catholic School we can be.

We have high expectations of ourselves and everyone in our community .

We aim to:

- Shape the whole person
- Strive for excellence
- Create inspiring learning space
- Build community

Love

Faith

Respect

Perseverance

Compassion

Inspiration

Leadership Structure

Headteacher: Miss Chwastek

Deputy Headteacher: Miss Quiligotti

**Assistant Headteachers: Mrs
McCormick & Mrs Richardson**



St. Catherine's
RC Primary School

Love

Faith

Respect

Perseverance

Compassion

Inspiration

What is the Early Years Foundation Stage?



St. Catherine's
RC Primary School

Playing and Exploring

Active Learning

**Creating and Thinking
Critically**

Love

Faith

Respect

Perseverance

Compassion

Inspiration

Prime Areas of Learning

Personal, Social and Emotional Development

Physical Development

Communication and Language



St. Catherine's
RC Primary School

Specific Areas of Learning

Literacy

Mathematics

Understanding the World

Expressive Arts and Design

Love

Faith

Respect

Perseverance

Compassion

Inspiration

Outdoor Learning



St. Catherine's
RC Primary School



Love

Faith

Respect

Perseverance

Compassion

Inspiration

PE



St. Catherine's
RC Primary School

Children will require a PE kit but not until after Christmas. This can be purchased from Goodies or MCS Stores

Love

Faith

Respect

Perseverance

Compassion

Inspiration

Other Events in School



St. Catherine's
RC Primary School



Love

Faith

Respect

Perseverance

Compassion

Inspiration

Daily Routine

Children arrive for Reception from 8.30am via Mrs McCormick's classroom.



St. Catherine's
RC Primary School

The children will have a peg which they should hang their coats and book bags on.

Love

Faith

Respect

Perseverance

Compassion

Inspiration

They will then put their lunchboxes away on the trolley.



St. Catherine's
RC Primary School

Children then sit on the carpet for the register and group time.

Love

Faith

Respect

Perseverance

Compassion

Inspiration

Children have access to 'snack' throughout the day. This is usually a piece of fruit.



St. Catherine's
RC Primary School

Children should bring their own bottle of water into school each day. They can help themselves to this throughout the day.

Love

Faith

Respect

Perseverance

Compassion

Inspiration

Lunchtime

Children to into the school hall for their lunch.

All children are eligible for a free school meal and parents choose what they would like their children to have in advance.

Some children still wish to have packed lunches.



St. Catherine's
RC Primary School

Monitoring Progress



St. Catherine's
RC Primary School

Learner observations



Nuala Walsh
16 May 2016 - 24 Jun 2016



St. Catherine's RC Primary School



Child Observation Sheet

Nuala Walsh
16 May 2016 - 24 Jun 2016

Date: 19-May-2016



Notes

The children moved with confidence and control on the play equipment,

Observed by
Mrs McCormick

Aspects contributed to by this experience:

- EL6: Children show good control and co-ordination in large and small movements,
Physical development-Moving and handling-Early Learning Goal
- EL6: They move confidently in a range of ways, safely negotiating space,
Physical development-Moving and handling-Early Learning Goal
- Travels with confidence and skill around, under, over and through balancing and climbing equipment,
Physical development-Moving and handling-40-60 months

2Build a Profile

2simple

Love

Faith

Respect

Perseverance

Compassion

Inspiration

Parental Input



St. Catherine's
RC Primary School

You can contribute to your child's learning journey.



Parents email observations to the school



Teachers approve and enhance the observations



Approved observations feed into reports and portfolios



Please send observations by replying to the PDF sent to you.

Love

Faith

Respect

Perseverance

Compassion

Inspiration

Parental Involvement



St. Catherine's
RC Primary School



Love

Faith

Respect

Perseverance

Compassion

Inspiration

School Ready



St. Catherine's
RC Primary School



Talk
Encourage
Share
Promote

Love

Faith

Respect

Perseverance

Compassion

Inspiration

The first few weeks...

- Visits into new classrooms on Tuesday 2nd and Thursday 4th July, 1:15pm-2:15pm
- Children will start by having four half days in Reception, two mornings and two afternoons.
- They will be full time from Tuesday 10th September.



St. Catherine's
RC Primary School

Love

Faith

Respect

Perseverance

Compassion

Inspiration

School Uniform



St. Catherine's
RC Primary School



Can be
delivered to
your home
or to school.

Love

Faith

Respect

Perseverance

Compassion

Inspiration



St. Catherine's
RC Primary School

- Communicating with parents is an important part of what we do and making sure you get the correct information about activities and events is something we care about.
- Our primary way of communicating with you is via ParentMail.

All payments to school should go through ParentMail.

We also use the forms section of ParentMail, so please check it regularly.

BENEFITS OF USING PARENTMAIL

- Via parentmail you are able to pay and give consent for trips, buildings fund and dinner money etc.
- There is a parentmail APP if you have a iphone or smartphone.
- eLetters are stored in your account for easy access.
- Both parents can register if required.
- Siblings accounts can be linked.

Free School Meals



If you get any of the following support payments your child may be entitled to receive free school meals:

- Income Support; or
- Income-based Jobseeker's Allowance; or
- Income-related Employment Support Allowance; or
- The guaranteed part of Pension Credit; or
- Child Tax Credit as long as it doesn't include an amount for childcare and as long as the household income is £16,190 a year or less. This income limit will be used until April 2012 but may go up in future years. Working tax Credit is **not** a qualifying income; or
- A Working Tax Credit 'run-on' payment for four weeks after stopping work or reducing working hours to under 16 hours a week.

St. Catherine's
RC Primary School

Please contact the local authority if you think you are eligible.

Love

Faith

Respect

Perseverance

Compassion

Inspiration

School Fund

This is a voluntary donation to the school which helps provide resources. School fund has been used for additional class resources and class activities.

We give a guideline of £1 a week but it is entirely at your own discretion how much you would like to donate to the school. Some parents send a £1 in each week others send £52 for the whole year.

This can be paid through parentmail.



St. Catherine's
RC Primary School



Love

Faith

Respect

Perseverance

Compassion

Inspiration

Diocesan Buildings Fund

Buildings fund is £15 this year per child.

Payable in September each year.

Here at St Catherine's we are undergoing massive building improvements which your children will benefit from in the future so it is **VERY** important that this fund is supported.



St. Catherine's
RC Primary School

Love

Faith

Respect

Perseverance

Compassion

Inspiration

Parent Teacher Association

As a parent of a child at St. Catherine's you are a member of the PTA.



St. Catherine's
RC Primary School

Get involved!

- Social events
- Fundraising

PTA UK | A PTA FOR ALL SCHOOLS
A VOICE FOR ALL PARENTS

There will be a meeting in September so come along and find out more.

<https://vimeo.com/340947898>

Love

Faith

Respect

Perseverance

Compassion

Inspiration

Attendance

- Going to school regularly is important to your child's future. YOU are legally responsible for making sure they attend every day.
- Holidays during school time are not permitted.
- Children who miss school frequently can fall behind.
- Children who miss school frequently can have difficulties with friendship groups
- When a child misses 10 days from school they have missed out on 5% of their education that school year.



St. Catherine's
RC Primary School

**Our target attendance next
year is 98%**

Love

Faith

Respect

Perseverance

Compassion

Inspiration

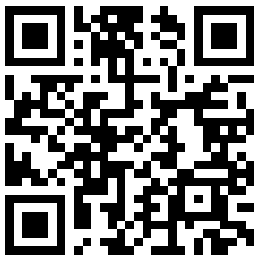
School Website



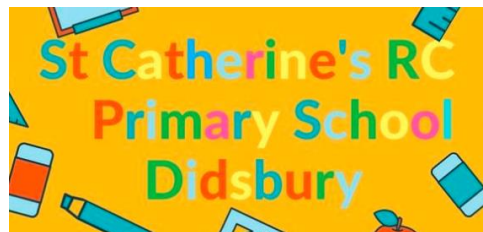
St. Catherine's
RC Primary School

Our school website can be found at
www.st-catherines.manchester.sch.uk

You may download the school app at
<http://stcatherinesrc.weejot.com/mobile>



We are now also on Facebook and
Twitter!



Love

Faith

Respect

Perseverance

Compassion

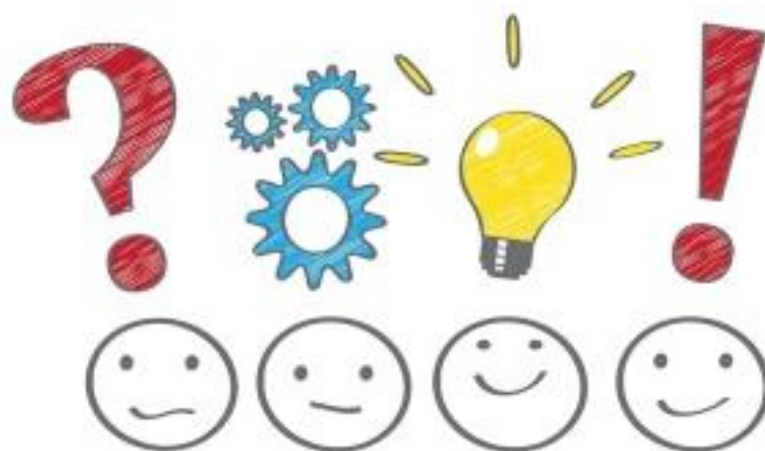
Inspiration

Please remember that if you have any concerns or questions, we will be happy to help you. We look forward to welcoming your child into Reception at St. Catherine's.



St. Catherine's
RC Primary School

Any Questions?



Love

Faith

Respect

Perseverance

Compassion

Inspiration