

Welcome



St. Catherine's
RC Primary School

Reception Reading and Phonics Meeting 2019

Wednesday 2nd October 2019

Love

Faith

Respect

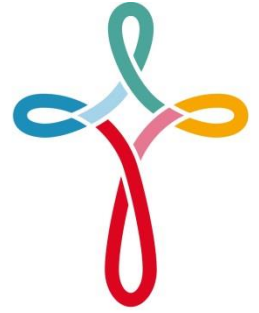
Perseverance

Compassion

Inspiration

Outcomes

- Introduction to Phonics
- Reading at home
- Reading in school
- Writing
- Other information
- Questions



St. Catherine's
RC Primary School

Phonics

What is phonics?



St. Catherine's
RC Primary School

**Skills of
segmentation
and blending**



**Knowledge
of the
alphabetic
code.**

Love

Faith

Respect

Perseverance

Compassion

Inspiration

Phonics

Some definitions

Phoneme- The smallest unit of a sound in a word.
Phonemes can be put together to make a word.

Grapheme- A written symbol that represents a sound.

Blending- This is a key skill children need in order to read. Children learn to blend sounds together to help them read words. They recognise and read the letters in a written word, e.g. c-a-t and then blending them in the order they are written to pronounce the word 'cat'.

Segmenting- The ability to break words down into their individual sounds, e.g. run, would be broken down into r-u-n.



St. Catherine's
RC Primary School

Phonics

- Letters and Sounds scheme
- 6 Phases
- Lessons daily, lasting 20 minutes.
- Lessons have 4 parts:
 1. Revisit and Review
 2. Teach
 3. Practise
 4. Apply
- Phase 1- focus on developing speaking and listening skills in preparation for Phase 2.
- Phase 2- introduction of letters and their sounds, one at a time starting to use blending and segmenting.



St. Catherine's
RC Primary School

cat
● ● ●
pin
● ● ●



St. Catherine's
RC Primary School

- **Phase 3-** New graphemes are introduced, including digraphs (2 letters making one sound) and trigraphs (3 letters making one sound)

e.g. sh, th, ai, oo, igh

- sh-o-p = shop
- b-a-th = bath
- r-ai-n = rain
- m-oo-n = moon
- s-igh = sigh

thin
queen

- **Phase 4-** No new sounds introduced.

- Consolidation of children's knowledge
 - CVCC and CCVC blends
- e.g. m-i-l-k = milk
t-r-a-p = trap

spin

- Phase 5- Children will learn more graphemes and phonemes and different ways to make the same sound.

e.g. ai- rain

ay- pay

a-e- make (split digraphs)

play
• • •

Magic 'E' no longer exists

make
• •



St. Catherine's
RC Primary School

- Phase 6- Children become more accurate readers and spellers.

Tricky Words

These are words which cannot be sounded out correctly. The only way these words can be read and spelt correctly is by learning them and having plenty of practise.

like



St. Catherine's
RC Primary School

to

they

come

are

the

go

he

said

me

Alien Words

These are also known as nonsense words. They have no definition, but can be segmented and blended to read.

At end of Year 1, children will take a Phonics Screening Test and these words form part of it.



St. Catherine's
RC Primary School

nog

spab

hild

quelm

tull

chom

mequ

tord

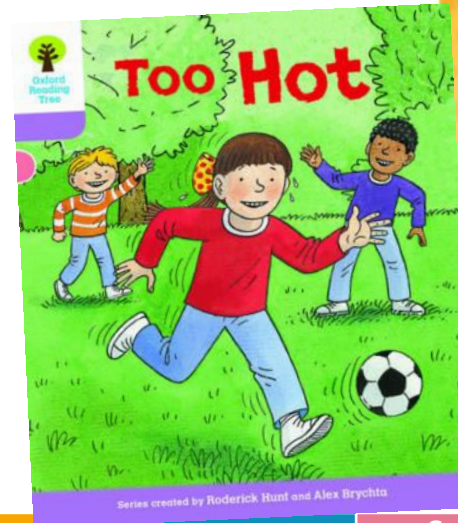
Reading

Reading books

- Please enjoy your child's first reading books!
- We want to promote reading for pleasure.
- Looks for initial sounds and common words, such as 'mum', 'dad' and 'I'.
- Begin to segment and blend simple words within the books.
- Ask lots of questions.
- Identify tricky words.



St. Catherine's
RC Primary School



Love

Faith

Respect

Perseverance

Compassion

Inspiration

Reading records

- Your child will be given a reading record.
- Please send this reading record into school every day with the reading book too.
- Please comment when you have read with your child so we know what is being achieved at home.
- If you have any queries or questions and do not get chance to speak to your class teacher then use this as a means of communication.
- Books in school are colour banded according to their level of difficulty, vocabulary and sentence structure.
- By the end of Reception, children are expected to be able to read a **YELLOW** banded book confidently.



St. Catherine's
RC Primary School

Y1	1A	Band 7 -Turquoise Phase 5/6 RR Levels: 17, 18
Y1	1B/A	Band 6 - Orange Phase 5/6 RR Levels: 15, 16
Y1	1B	Band 5 - Green Phase 5 RR Levels: 12, 13, 14
Y1	1C/B	Band 4 - Blue Phase 4/5 RR Levels: 9, 10, 11
Reception/Y1		Band 3 - Yellow Phase 3-4 RR Levels: 6, 7, 8
EYFS		Band 2 - Red Approx Phase 3 RR Levels: 3, 4, 5
EYFS Learning to attend to print		Band 1 – Pink (Dark) Phase 2 RR Levels: 2
EYFS Learning about how books work		Band 1 – Pink (Light) Phase 2 RR Levels: 1

Love

Faith

Respect

Perseverance

Compassion

Inspiration

Reading records

- Books will be changed weekly.

Red Groups- Monday

Yellow Groups- Tuesday

Green Groups- Wednesday

Blue Groups- Thursday



St. Catherine's
RC Primary School

It would be really helpful, that if on the day of your child's book change, they could arrive at school for 8:30am.

Love

Faith

Respect

Perseverance

Compassion

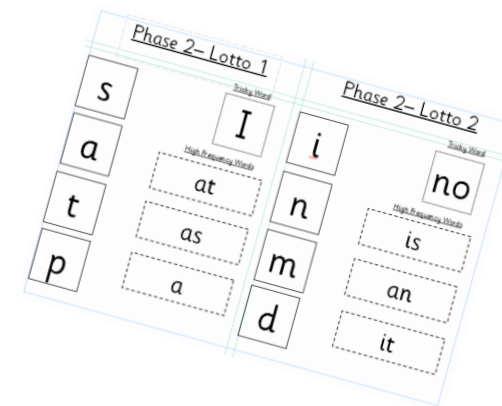
Inspiration

Lottos

- Your child will receive a 'lotto' in their reading record alongside their books.
- These are to support your child in their knowledge of letters and sounds and high frequency words.
- Please practise these at home.
- We will check your child's knowledge of these sounds and words each week.
- When they are secure in all sounds and words, they will receive the next lotto.



St. Catherine's
RC Primary School



Love

Faith

Respect

Perseverance

Compassion

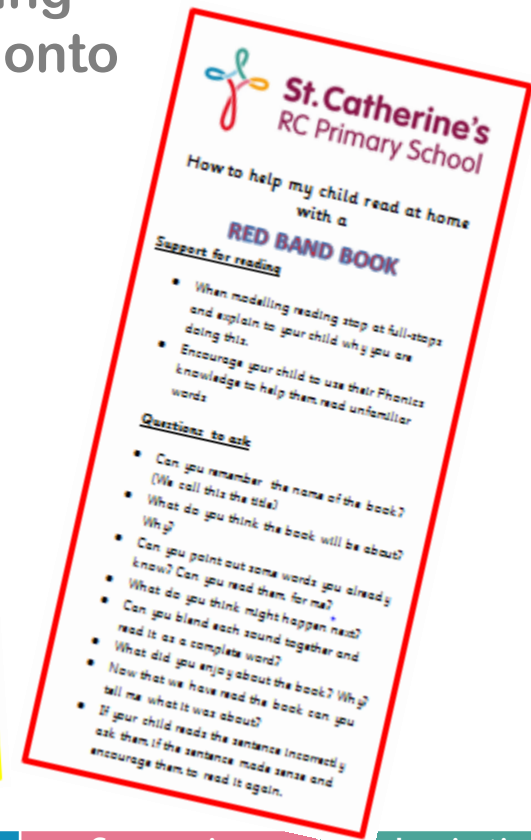
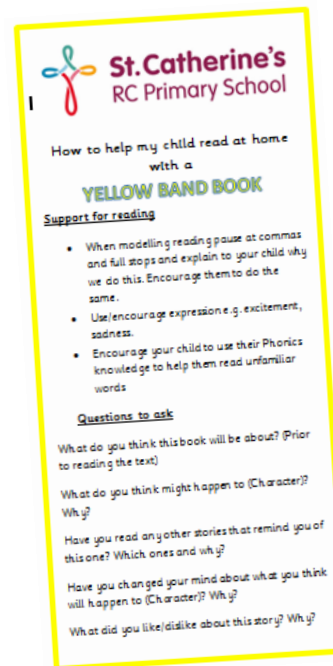
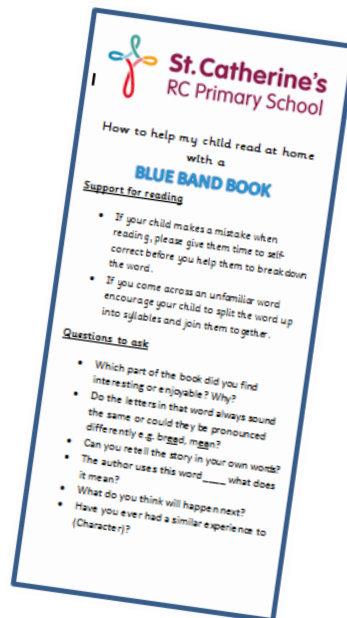
Inspiration

Home Reading Cards

- These are to support you in how to help your child with the levelled book they take home.
- They will be attached to your child's reading record and will be changed as they move onto each band.



St. Catherine's
RC Primary School



Love

Faith

Respect

Perseverance

Compassion

Inspiration



St. Catherine's
RC Primary School

Reading at school

- Children will participate in a small group guided reading session once a week/ fortnightly. During this time they will read independently.
- They will be asked questions about the content of what they have read and make predictions, talk about characters etc.
- Please encourage your child to take care of their books and have them and their record book in their book bags every day.
- The children will go to our school library weekly and are able to choose a book to bring home.



Love

Faith

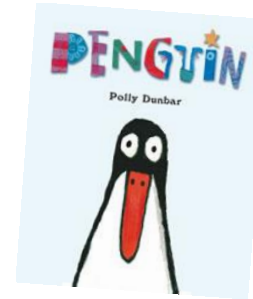
Respect

Perseverance

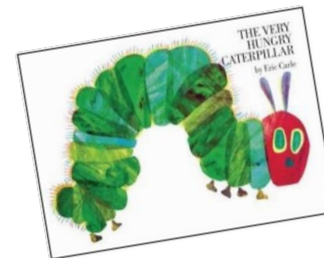
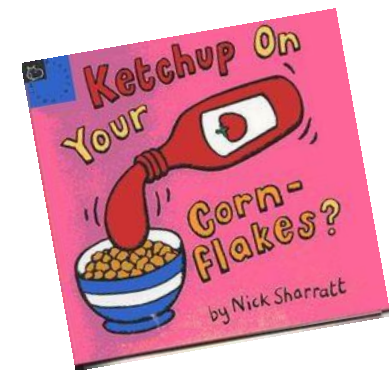
Inspiration

Supporting reading at home

- Daily story time
- Rhyme and alliteration games
- Alphabet songs
- Magnetic letters
- Nursery rhymes
- Speaking and listening e.g. shopping, cooking etc
- Puppets and toys
- Role play
- Trips to the library



St. Catherine's
RC Primary School



Love

Faith

Respect

Perseverance

Compassion

Inspiration

Writing

Letter-join 



St. Catherine's
RC Primary School



Every letter
starts from
the line!

Love

Faith

Respect

Perseverance

Compassion

Inspiration

Useful Websites & Apps

www.lettersandsounds.com

www.oxfordowl.co.uk

www.letterjoin.co.uk

www.theschoolrun.com

- Twinkl Phonics
- Hairy Letters
- Pocket Phonics
- Teach your Monster to read



St. Catherine's
RC Primary School

Other Information

- Homework
- Labelling items
- School Dinners/ Packed Lunches
- Water bottles
- Wellies
- Spare clothes
- Birthdays

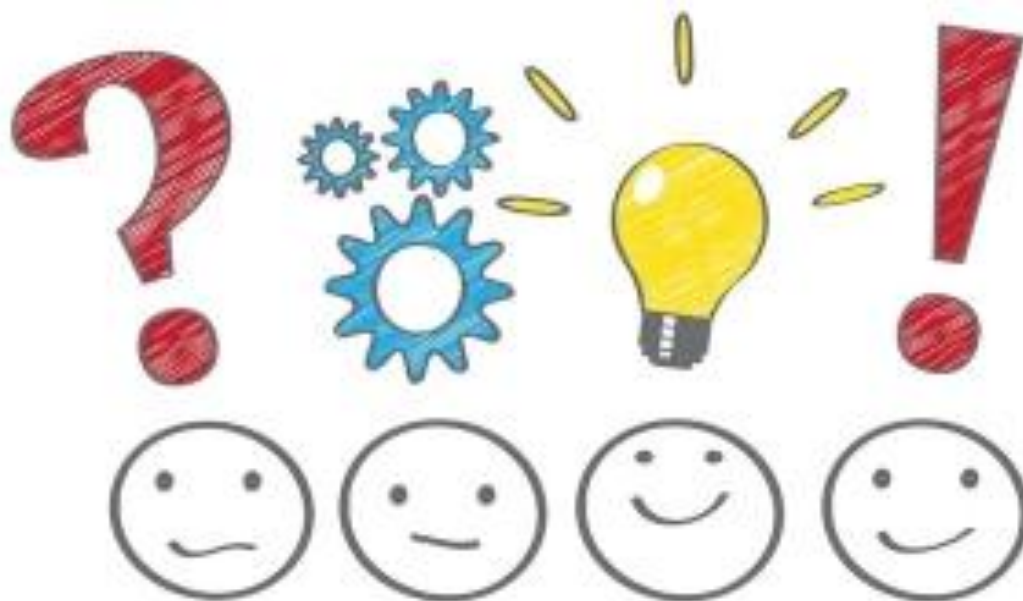


St. Catherine's
RC Primary School

Any Questions?



St. Catherine's
RC Primary School



Love

Faith

Respect

Perseverance

Compassion

Inspiration



St. Catherine's
RC Primary School

- We have an open door policy and are always happy to answer any questions you may have. Please be aware that the mornings are very busy!
- If you wish to make an appointment please contact the office on 0161 445 6359 or admin@st-catherines.manchester.sch.uk

Love

Faith

Respect

Perseverance

Compassion

Inspiration



St. Catherine's
RC Primary School



Love

Faith

Respect

Perseverance

Compassion

Inspiration